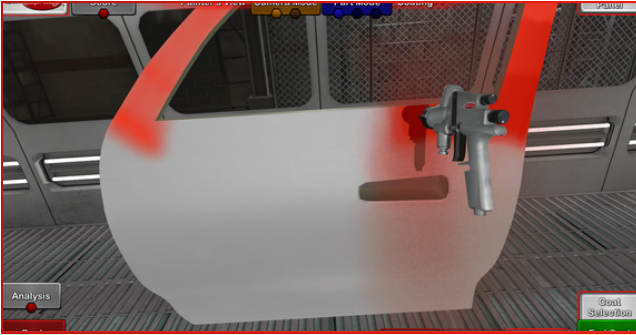


# VIRTUAL TRAINING PAINT & COATINGS

SIMSPRAY OFFERS **EASY-TO-USE**, SIMULATION-BASED PAINTING & COATINGS TRAINING. TEACH **HVLP, AIRLESS, OR AIR-ASSISTED AIRLESS** PROCESSES. SAVE TIME, REDUCE WASTE, AND **ACCELERATE** TRAINING WITH IMMERSIVE VR TECHNOLOGY.



## Why SimSpray?

SimSpray's high-quality training features support faster, safer, better training. These VR training tools allow you to **teach painting & coatings skills up to 5x faster** and **reduce material costs by up to 50%**.

- ▶ "Plug n Play" Setup
- ▶ Visual Cues
- ▶ Paintometer ROI Tracking
- ▶ Live Performance Feedback
- ▶ Zero-Waste Training
- ▶ Integrated Curriculum
- ▶ Paint Editor
- ▶ Performance Tracking

## Multi-Language Integration for Wider Accessibility

*SimSpray gives you a lot of repetitions in a pretty short period of time, which you can't get in a production environment today.*

- New Model Paint Project Lead  
at East Liberty Auto Plant



## The Training Standard SIMSPRAY

SimSpray is the premier training tool that supports a robust set of coating processes. Our model recommendations for painting & coatings training are either **SimSpray Paint** or **SimSpray Enterprise**.

## What's Available TRAINING CONTENT

**Specialized Content:** Automotive, Aerospace, Furniture & Cabinetry, Building Trades, Rail, Marine, Truck, and Structural content packs are available.

Ask us about custom part design!

## Go Mobile SIMSPRAY GO

SimSpray Go is a compact, portable version of SimSpray. We recommend **SimSpray Go** to support painting & coatings training for schools and specialty manufacturers who have more mobile training needs.



SIMSPRAY.NET | SALES@SIMSPRAY.NET | 860-893-0080  
Copyright VRSim, Inc. 2025, Version 3.4.1



## Featuring:

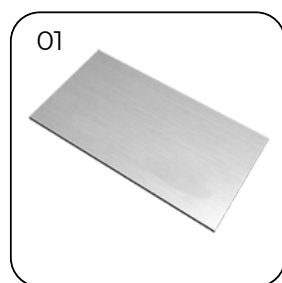
**18 Fundamental Geometric Shapes**

**8 Testing Panels**

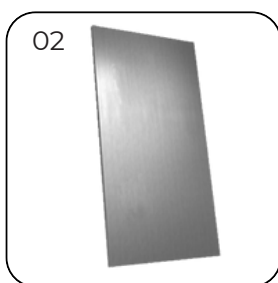
**Customizable Paint and Material Systems**

**Basic Learning Curriculum**

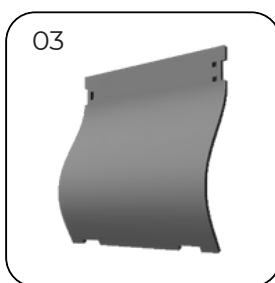
This content is available for **SimSpray 3** models with **Paint** or **Abrasive Blasting** processes.



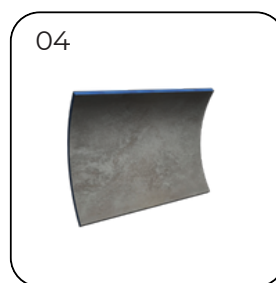
**Panel Horizontal Small**



**Panel Vertical Small**



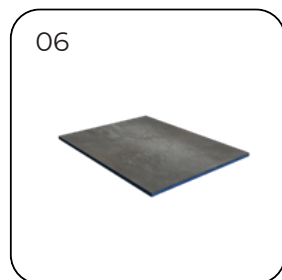
**Panel Curve Small**



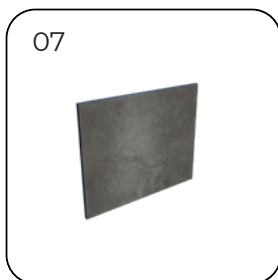
**Panel Curve**



**Panel Curve Complex**



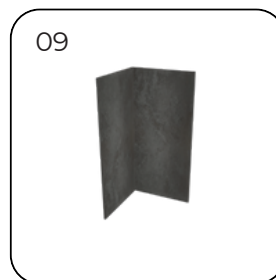
**Panel Horizontal**



**Panel Vertical**



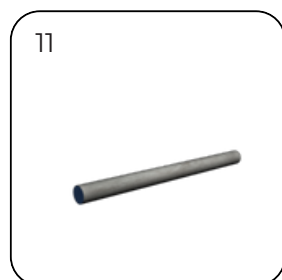
**Box**



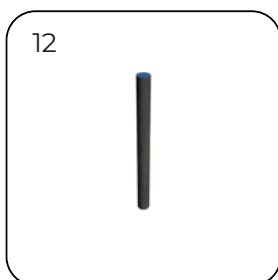
**Corner**



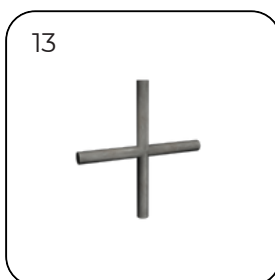
**Corners Interior**



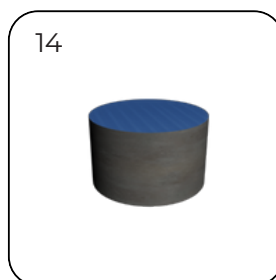
**Cylinder Horizontal**



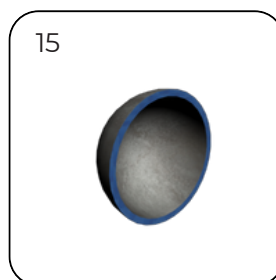
**Cylinder Vertical**



**Cylinders Combined**

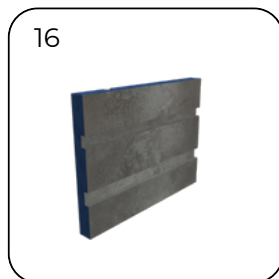


**Cylinder Large**

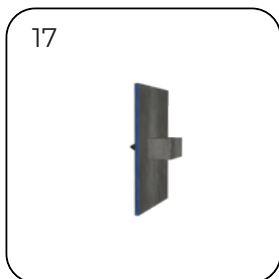


**Sphere Half**

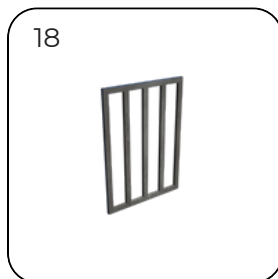
## Geometric Shapes (cont.)



**Panel with Grooves**

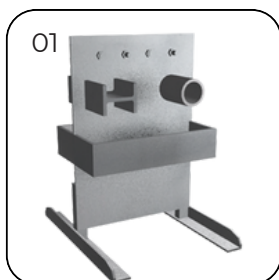


**Panel with Shapes**

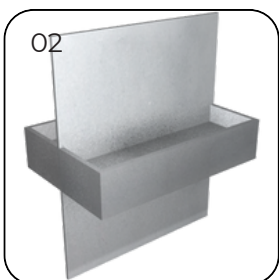


**Panel with Cutouts**

## Testing Panels



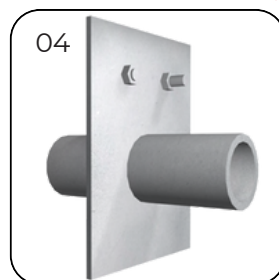
**ASTM Panel**



**ASTM Deep T**



**ASTM H-Beam**



**ASTM Pipe**



**ACQPA Panel**



**ACQPA Panel Cylinder**



**ACQPA Panel Horizontal**



**ACQPA Panel Vertical**