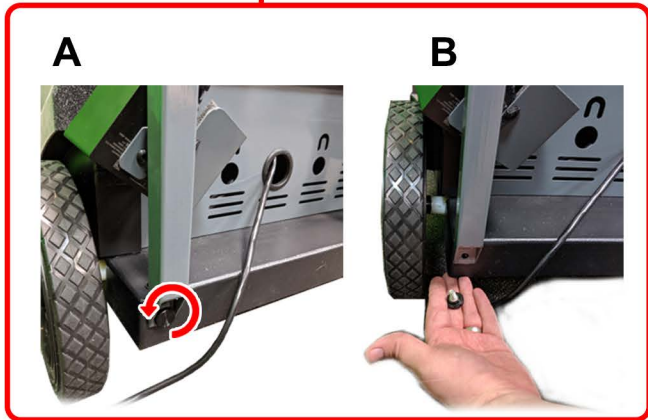
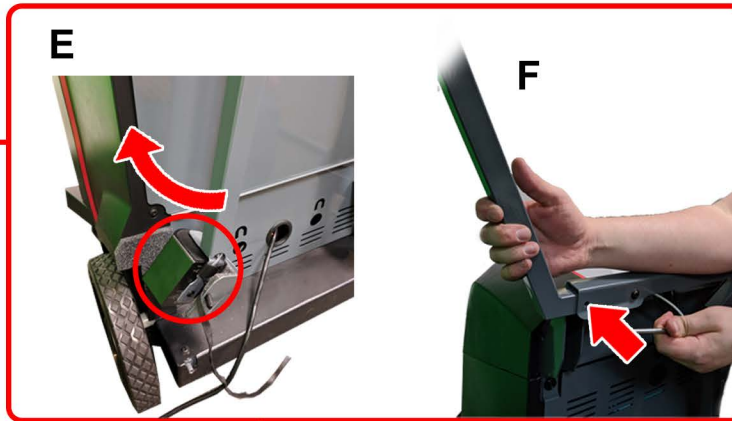
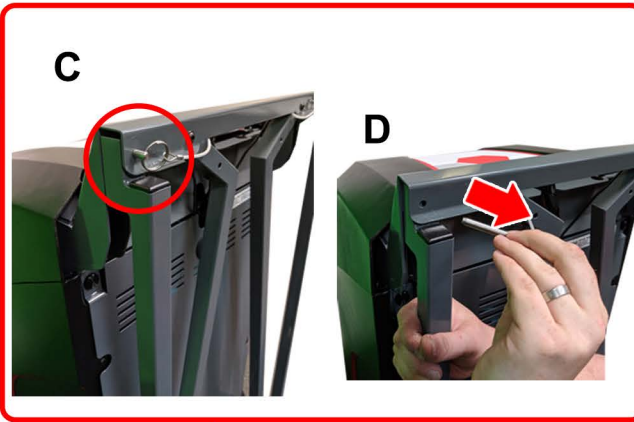


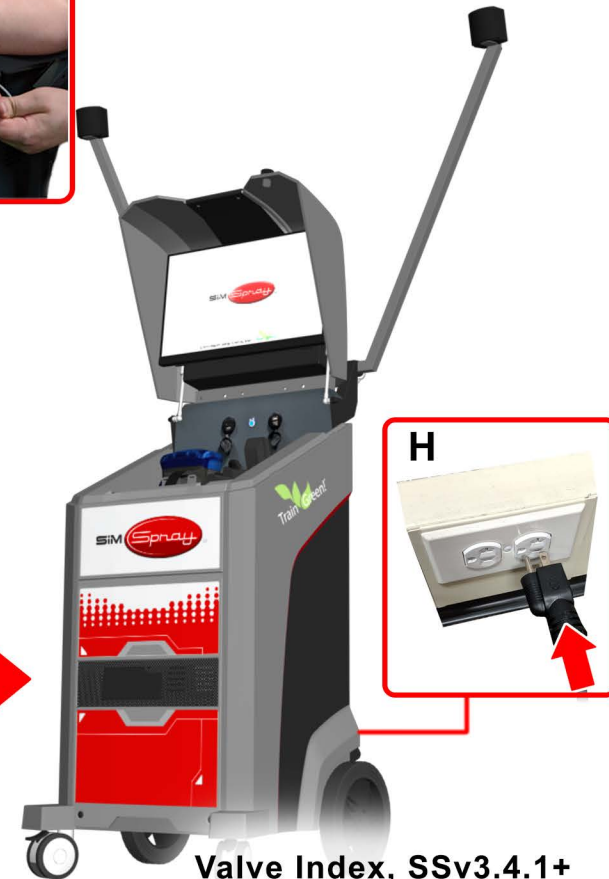
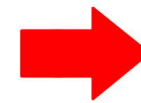


SETUP 01 VALVE INDEX

BACK VIEW

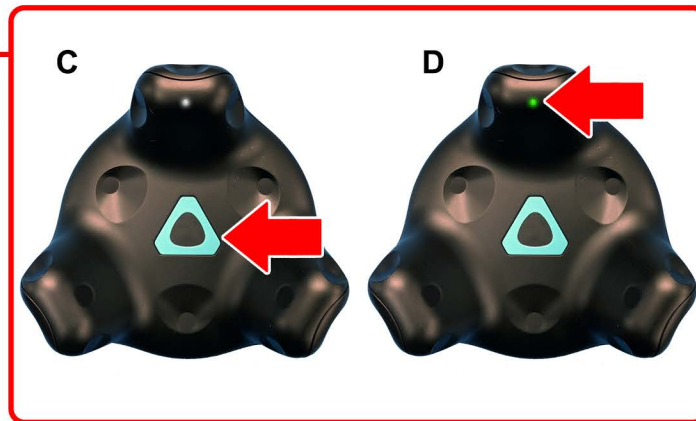
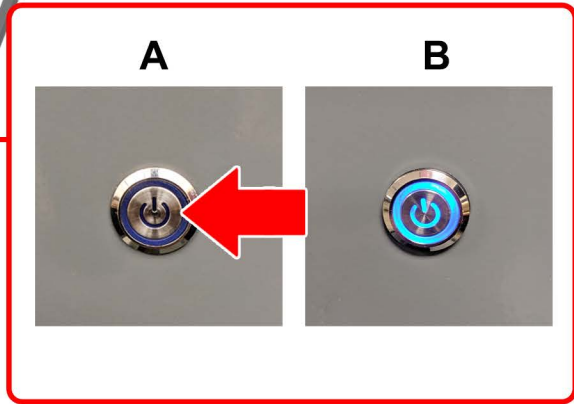


FRONT VIEW





SETUP 02





POSITIONING

TOP VIEW

10' (3.05m)

8' (2.44m)



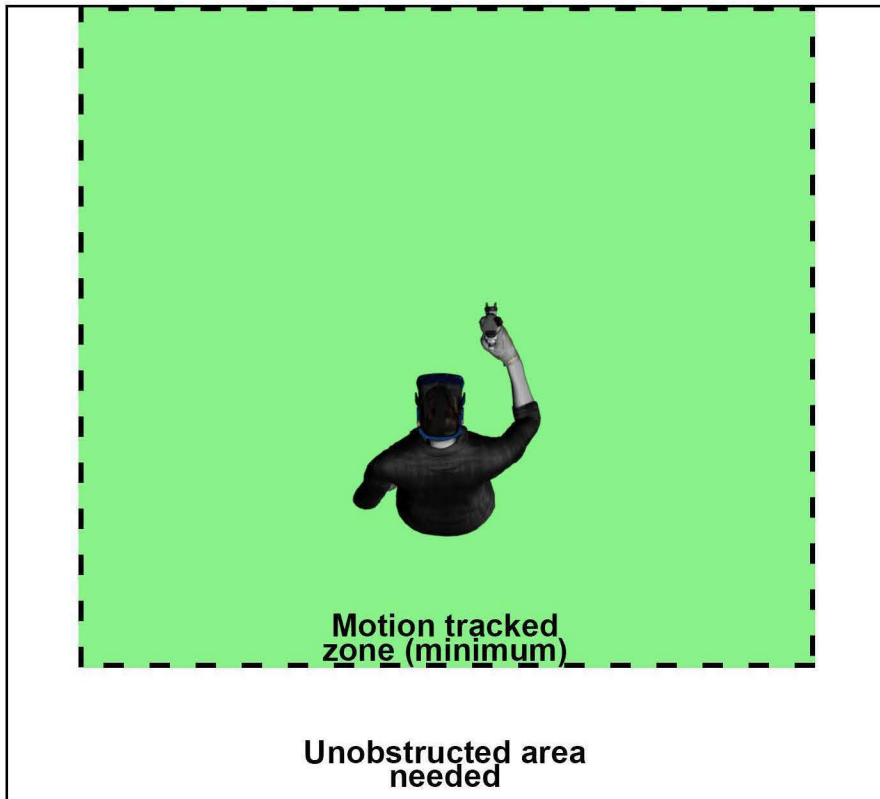
IMAGES NOT TO SCALE

11'

8'

(3.35m)

(2.44m)



Motion tracked
zone (minimum)

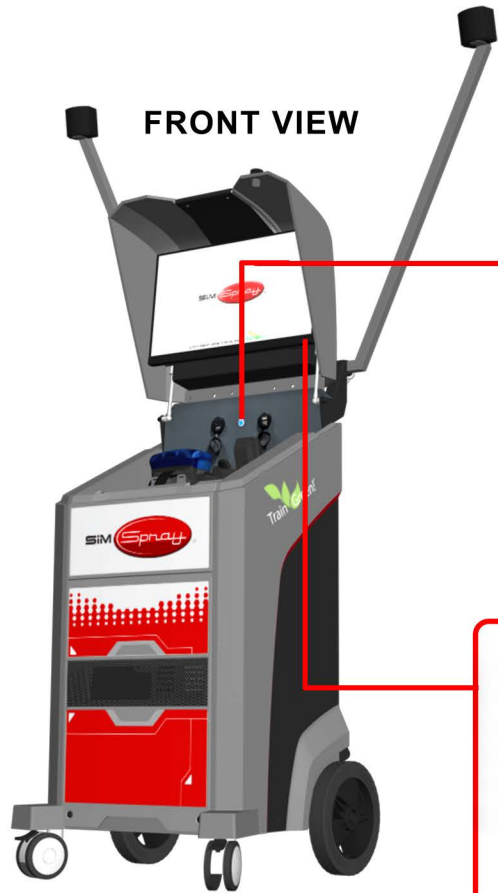
Unobstructed area
needed

- Aim SimSpray away from windows, TVs, infrared sources, and reflective materials.
- Turn off infrared emitting devices.
- Bluetooth devices may reduce motion tracking quality.
- 9' (2.74m) height minimum recommended.

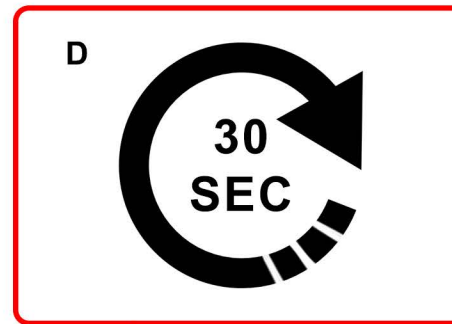
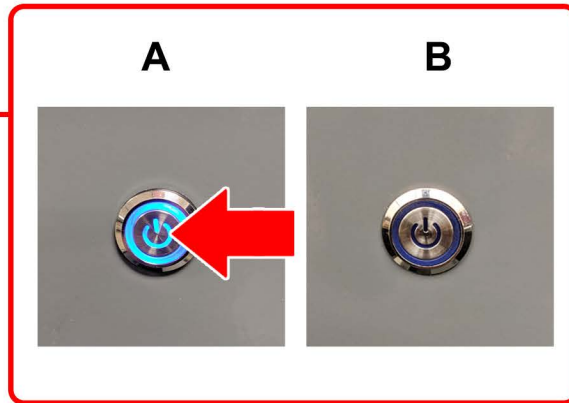
Note: this positioning applies to SimSpray software version 3.4 or later.



POWER DOWN



FRONT VIEW





DOCUMENTATION

Scan Here for Additional Support:



SETUP



TROUBLESHOOTING